



Bedrooms: 4  
Baths: 4.2  
Garage Bays: 7  
Approximately 6,380 sf  
(optional walkout level  
adds an additional 3,220 sf)



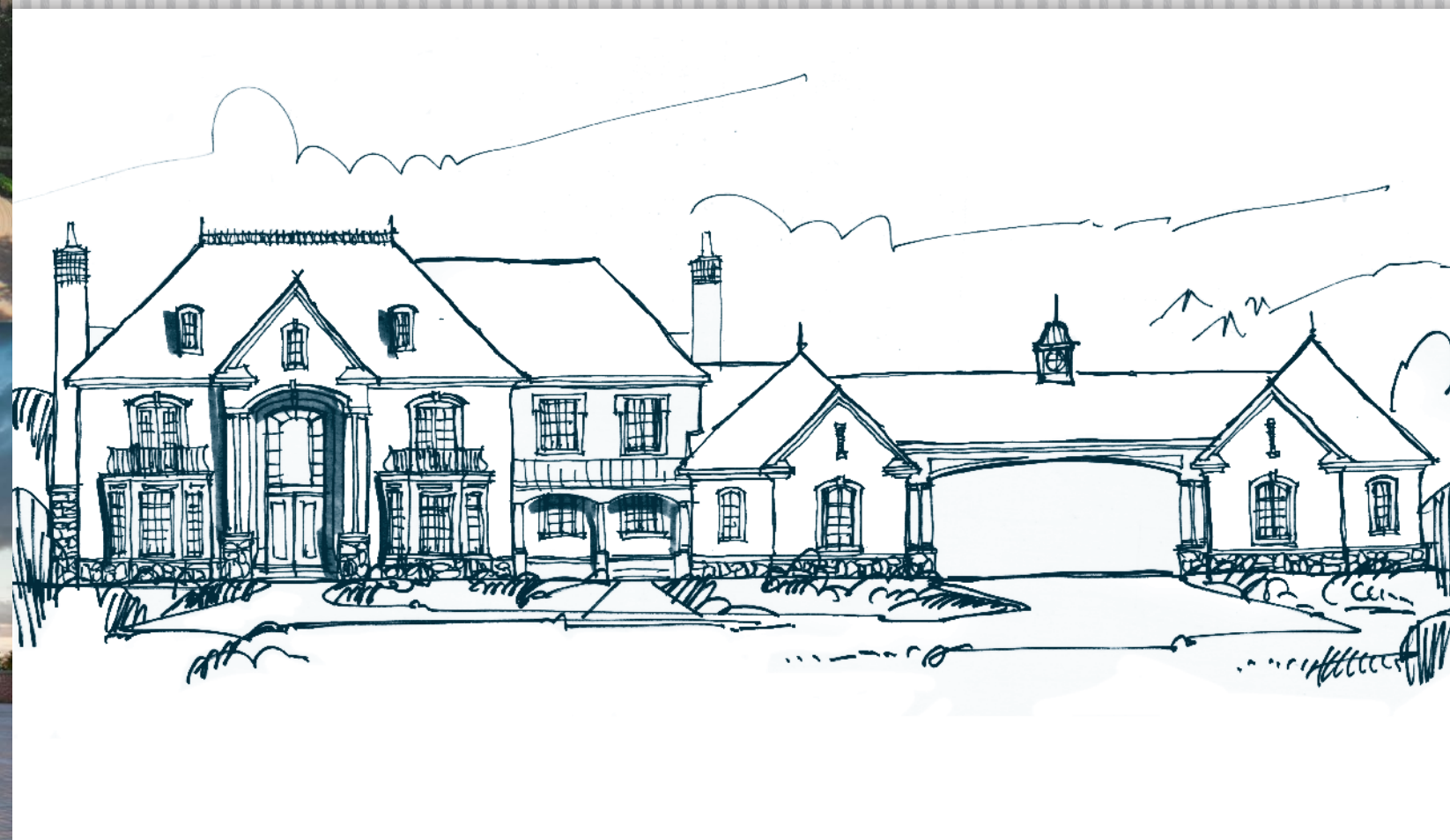
MOCERI

STRUCTURE • INTEGRITY • TRADITION®



WESTCHESTER PLATINUM

*Classic Collection*



MOCERI

STRUCTURE • INTEGRITY • TRADITION®



WESTCHESTER PLATINUM

*Classic Collection*

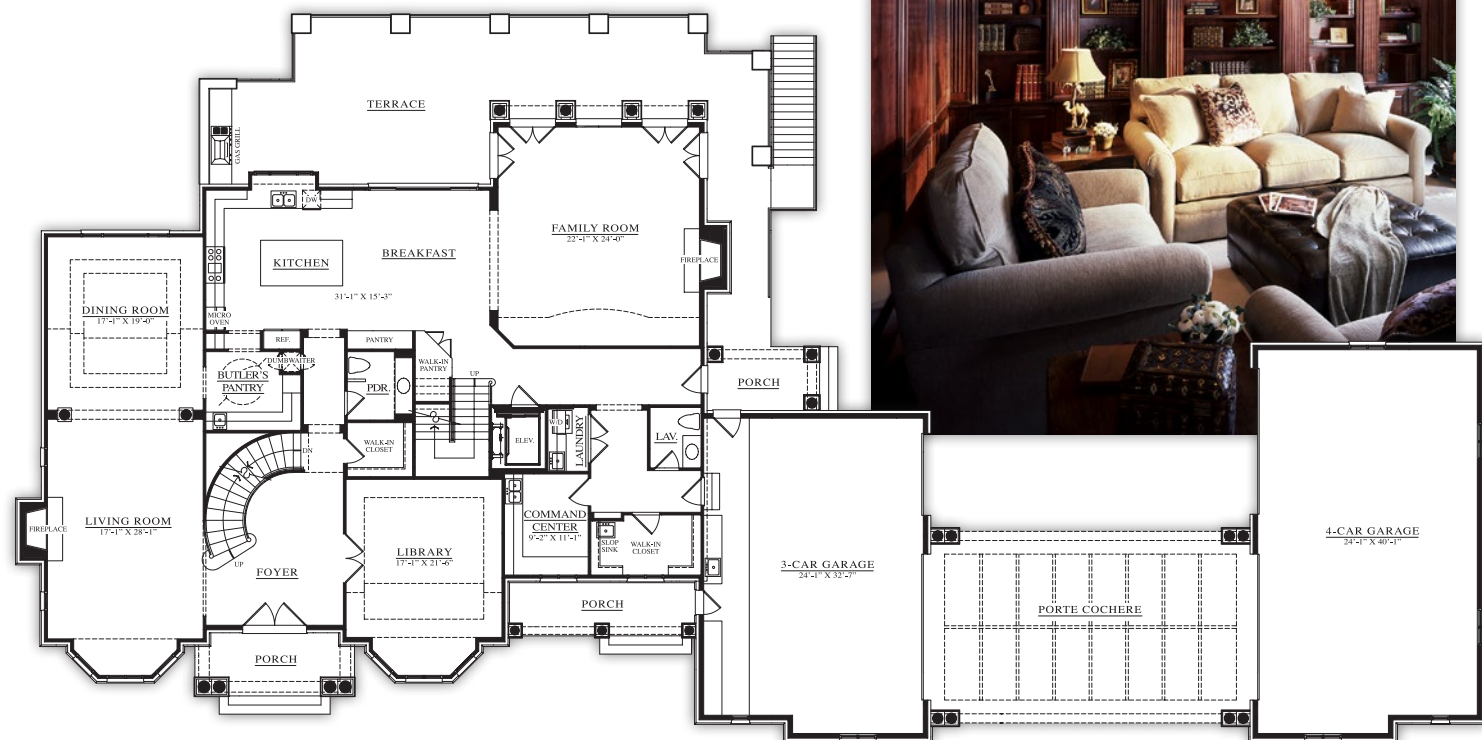
*Dominick Tringali*  
ARCHITECTURAL COLLECTION



## WESTCHESTER PLATINUM

*Classic Collection*

Approximately 6,380 sf (optional walkout level adds additional 3,220 sf)

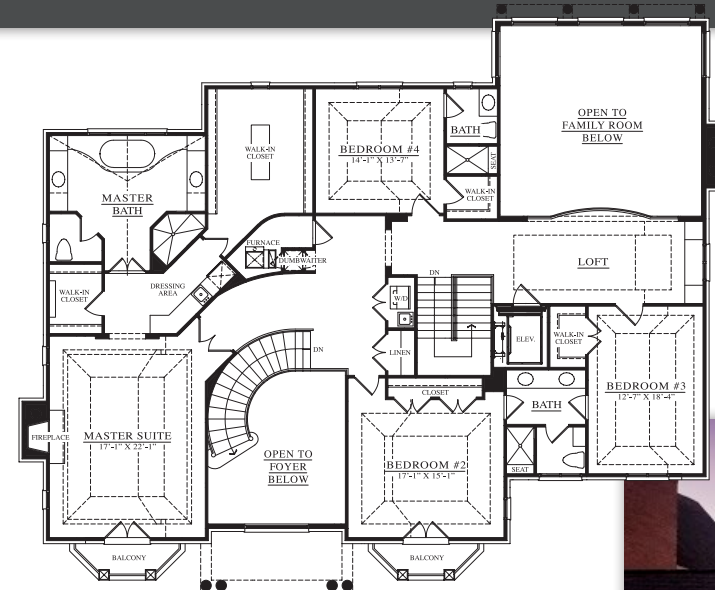


FIRST LEVEL



*This classic design's impressive elevation is marked by its porte cochère and bronze-domed cupola, which links the home's dual garages containing a combined total of seven parking bays. Inside the home, a majestic two-story foyer leads into a spacious, professionally equipped kitchen, dining nook and family room. The home's use of open spaces meld these three rooms together – a feature also found in the formal entertaining wing, consisting of traditional dining and living rooms. A terrace off the kitchen, multiple porches and a covered terrace attached to the optional walkout level provide a multitude of outdoor entertainment possibilities.*

*On the second level the spacious owner's suite occupies an entire wing. The walkout level includes a variety of recreation ideas, ranging from a gym and game room to lounge and media room.*



SECOND LEVEL

